

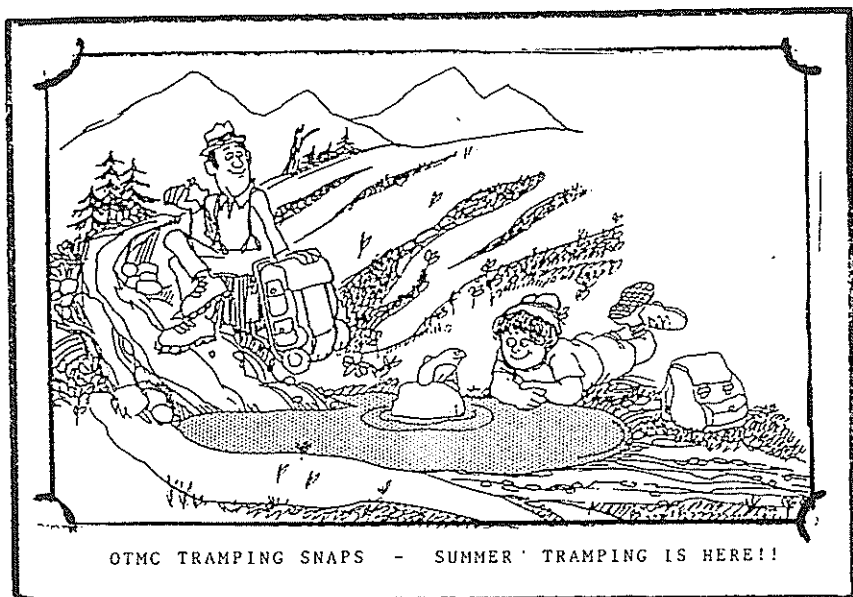
Otago Tramping and Mountaineering Club
P.O. BOX 1120 DUNEDIN

BULLETIN

Registered at P.O.H.Q. Wellington for Transmission by Post as a Magazine

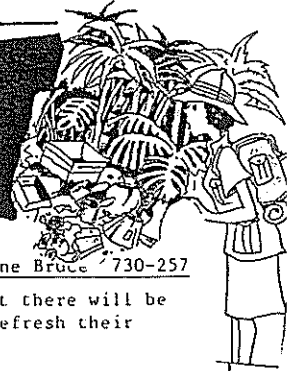
NOVEMBER 1989

BULLETIN NO. 483



PRESIDENT	Stuart Mathieson	534-359
VICE PRESIDENT	Rhonda Robinson	738-142
SECRETARY	Mark Planner	763-988
TREASURER	Teresa Wasilewska	776-685
CHIEF GUIDE	Antony Pettinger	737-924
EDITOR	Debbie Pettinger	737-924
MEMBERSHIP SEC.	Ian Sime	536-185
SOCIAL SEC.	Elspeith Gold	551-245
GEAR HIRE	Russell Godfrey	878-732

TRIP LIST



November 19

NICOLLS CREEK (M)

Jane Bruce 730-257

There hasn't been a trip here for a long time so I'm sure that there will be a lot of people who don't know where it is or would like to refresh their memories.

Front up at the clubrooms at 9-00 am sharp.

November 18-19

THE BOWELS OF THE EARTH (ALL)

Yes there is a real place by this name and as it is a real mystrey trip with not many people knowing it's actual whereabouts, you can guarantee this will be one of the trips of the year.

Don't miss out and sign the tip list before it closes on 9 November.

November 26

NARDOO V (M)

Ross Cocker 545-995

Need I write any more?

This is the fifth time Ross has been to Nardoo which in itself must say what a nice place it must be but the last time Ross went, they had great weather and Ross has promised more of the same for this trip.

Leaves clubrooms at 9-00 am.

December 3

NENTHORN TO MT HIGHLAY DISTRICT (E)

Peter Mason 557-074

A chance to explore the old Nenthorn Goldfield and township, then journey by car to Golden mining area and back via Macreas Flat. Peter will attempt to explain the workings of the latest Mining venture at Round hill. Leaves extra early at 7-30 am

December 2-3

HUXLEY-HOPKINS (ALL)

David Peacock 530-595

Believe it or not but David has almost promised to lead this trip.

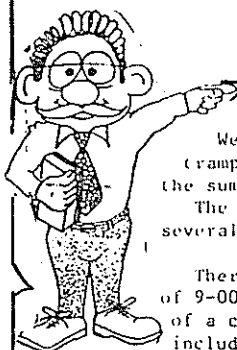
There is a lot of scope with this area for all fitness ranges from easy valley walks to more energetic round trips and passes to conquer. This is the last trip of the year so make sure you're on it.

Trip List closes 23 November.

JUST A FRIENDLY REMINDER

When travelling in club vans please do not pull the rear view mirror out of it's socket. This has proved to be a costly business for the owner, as they become loose after a couple of times and cost a lot to replace. So, in future, if you are travelling in front either, look around or under the rear view mirror please.

.... Antony Pettinger
Transport Officer



EDITOR'S DIARY

Well, summer is here again and so are those long, hot days tramping. The club has several exciting trips planned throughout the summer, with Bushcraft 1990 timed for February - March.

The recent trip planning evening proved a success and also raised several issues that should be discussed.

There was the question of Day trips starting at 8-00 am instead of 9-00 am during daylight savings time. This would give the club more of a choice as to where to go, with several fitter trips being included. The Chief Guide tells me there will hopefully be some run from January - March 1990, on a trail period. I would be interested to hear what other members think - write to the bulletin and have your say.

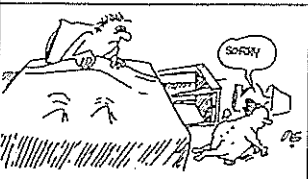
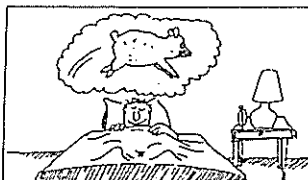
Also raised was the idea of three day weekend trips on normal two day weekends. This would give people who can take a day off here and there, the chance to have several long weekend tramps throughout the year. Discussion seemed to be decided, and I think the general consensus was that people could advertise in the bulletin if they wanted to have a longer trip.

Other items mentioned were that Easter should be an option of four or five days, and this will be tried next year.

Snowcraft courses have been shifted to September, after some bad runs in the last four consecutive years with snow conditions not being right.

All in all, the trip programme is coming along quite nicely, although more feed back and volunteers are always needed.

Write to the Editor and tell us what you feel should be done with our trips.



A MESSAGE TO ALL THOSE WHO DID NOT KNOW

On November 4, 1989 a lot of telephone numbers in the Dunedin district will change.

If the number you are calling begins with :-

4 add 5 eg; 42-397 becomes 542-397

5 add 5 eg; 57-641 becomes 557-641

3 add 5

6 add 7

and hopefully there won't be too many wrong numbers.

.....Ed

LETTERS TO THE EDITOR



This is a column in which, you, the club member may speak out if you feel strongly about any particular subject from your last trip in the hills to the lack of loo paper in some long drops. Try putting pen to paper and see what happens.

.....Editor

Dear Editor

As a member of the Universal Tramping Boot Movement - New Zealand Branch, I feel it is time to speak out about the rights of boots.

I have been a member of the movement since I was first manufactured two years ago and am now in the bottom of a cupboard. My left sole is nearly completely fallen off and my laces are both broken and tied in a number of places. The stitching on my left heel is gone completely and my right heel is starting to come away. I have not seen a coat of Dubin since my third tramp.

I was a proud boot when first bought. I have seen numerous stones on the bottom of countless rivers and the top of several small mountains. I have frozen solid in winter and endured smelly, sweaty feet for stretches of up to ten hours or more at one time. Please do not think that I am complaining because I am not. This is all part of my life. The life of your tramping boot.

The main point of this letter is that we, the Tramping Boot Movement, feel more attention and care would not be missed by us. Waterproffing not only makes me feel good it also softens my attitude towards you and thus helps me not to give you blisters.

Finally, next time you take off your boots after a tramp, spare a thought on how your boots must feel. After all they were the ones who got you there in the first place.

Yours faithfully

SOLE BOOT.

(some food for thought here - any queries on how to clean or care for you boots try asking Doug Forrester He did an excellent job on Bushcraft 1989 - Ed)

DON'T FORGET if you have any contributions for your club magazine, ie letters to the editor, trip reports, poems, drawings, recipes, etc, either hand them to Debbie or Antony Pettinger on Thursday club nights or send them to 'The Editor' OTMC P O Box 1120 DUNEDIN.

Committee Notes.

This month the committee meeting was held at the Presidents house in Mornington.

Points raised from this meeting that may be of interest to members were:-

The club will no longer be selling hut tickets. The main reason for this was the cut in discount offered to members by DOC. However if there is sufficient demand for them then the club will definately look at selling them again. If you are one of the people that buy these tickets regularly from the club, let the Treasurer know so we can judge the demand for them.

As from November 1, a late fee will be charged if trip payment is not made by the Thursday prior to departure or if posted then, post marked the day of departure. A time to save some money and pay early when going on a trip.

The treasurer would like to request that when paying by cheque please endorse all cheques with the reason for payment on the back. This will make the job a lot easier.

All new members are asked to fill in a claim form with trips and dates in order to claim back non-member surcharges paid. If no claim form is handed in, then there will be no refund.

NOTICE

Due to a small oversight the answers to the September Bulletin's quiz were not put in the October one.

1. John Robinson
2. Dave Levick
3. David Peacock
4. Antony Pettinger
5. No
6. Ken, Bruce and Peter
7. Ross Cocker
8. Doug Forrester
9. Ron Keen, Richard Pettinger, Trevor Puller
Bruce & Ken Mason, Dave Still, Nancy Munro
Bruce Moore, Marie McDonald, Lyall Campbell,
Mrs P L Moore, Alan Thomson.
10. Bill Provan
11. Don Greer
12. Michelle Metherall
13. Arthur Blondell
14. Kathy Woodrow
15. Sue Harding
16. John Bevin
17. Mike Floate to Nelson Lakes
18. Micheile Williams
19. Teresa Wasilewska
20. No

AN IMPORTANT MESSAGE!!!!

Simon Thomas has now stepped down from the job of Gear Hire Officer because of other commitments and Russell Godfrey has now taken the job over.

Russell would like to ask that when hiring gear, please have the correct money or cheque.

Charges:-

Tent fly	\$3-00
Ice-axe	\$3-00
Crampons	\$4-00

Non-members and week hire charges, please double.

So if you are requiring some of the clubs gear for a weekend then please see Russell on Thursday nights or contact him at 878-732.

When bouncing on a rope
One feels a fervent hope
That both it and your mate can hold you.

KEY SUMMIT TO CASCADE SADDLE

7-8 October

Since the three of us had the van Friday night, we parked it in at The Lake Gunn picnic site and on Saturday morning awoke to a peaceful lakeside scene - which Teresa soon proceeded to disturb by plunging her body into the freezing water! After breakfast on the picnic table (how civilised!) we drove down to The Divide and at the reasonable hour of 9-45 am set off up to Key Summit.

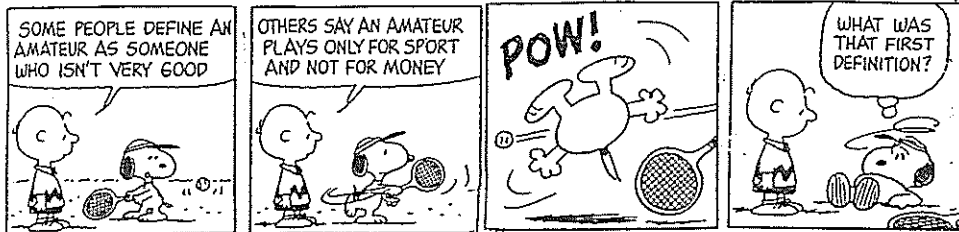
The weather was perfect and the views got better and better all day with Mt Christina especially beautiful. The going was easy at first with pretty little tarns everywhere and a few larger ones. We rewarded ourselves for three hours ambling by having lunch by one of the large tarns, sunning ourselves (much to Tim Moore's party's consternation when they happened upon us semi-clothed). The route became much more uphill as we strived to avoid the large bluffs on the Greenstone side - we kept heading more to the Eglington side which meant climbing to 5000 feet instead of taking the easier looking route which although avoided the peaks ended in bluffs.

At about 5 pm after many scroggin stops, we arrived at Cascade Saddle, having lost Tim's party somewhere down towards the bluffs. A long search found an almost level, almost large enough, almost lump free place to put up our tent with a tiny flat area upon which to perch the cooker. We had a superb view over the Greenstone whilst we ate our modest meal of pasta with fresh veges, smoked mussels, bananas, grapes braised in brown sugar, lemon juice with cream plus coffee and Kaluha to finish with. (Sounds great - who was the cook? - Ed).

Next morning breakfast of bacon, mushrooms and tomatoes went down well. Once we were all up - Rosemary seemed to think our clocks should be put back instead of forward and hence we slept in till 9-30 am. (NB: sleeping on Rosemary's left can be very interesting - if you're into sharing body warmth!!).

We found Williamson's track easily on the ridge to the right of the saddle and followed it down into the Greenstone (it emerges on the track to the McKeller Hut, behind the "Now Entering The Whakatipu State Forest" sign). After five hours we arrived back out at The Divide.

A very worthwhile trip with great tucker and congenial company. Rhonda Robinson for Teresa Wasilewska and Rosemary Goodyear.



FIND-A WORD

Backpack	S A G M O U N T A I N P A S S
Billy	R S S A P M O C V F G E S U I
Bivybag	E E O I B S T R O H S A E A F
Blisters	T B A C K P A C K E D K V P V
Bluff	S I H E Z N R I A C I P O A T
Boot	I V E A P R N E O R N O L R G
Cairn	L Y N X T L R M X A R L G K O
Carrymat	B B T E R I K C S M Y Y X A V
Compass	S A L Y F A M B L P H P M J E
Crampons	I G O U W G B M A O I R S A R
Enjoy	T E N T F X S M V N T O R K T
Fire	L I G O L F R E T S M P Y U R
Fuel	E N J O Y K E X U L Q L H F O
Fly	U F O B E D T M D Z L E L C U
Gaiters	F Q H W R A I E Y I P N B I S
Gloves	X U N A V R A T B G N E G K E
Goretex	P T S Z P T G O R E T E X A R
Hat	G N I S S O R C R E V I R S S

Hut	
Iceaxe	
Longjohns	Rivercrossing
Map	Shorts
Mountain Pass	Summit
Overtrousers	Tarn
Parka	Tent
Peak	Track
Polypropylene	Valley
Primus	

VIEW POINT

Carved-out glacial trails
 Steep rugged alps
 Look down on ferocious eroded gorges
 Desolate tarns reflect
 The splendour of native forestlands
 Winding rushing streams
 Meander through limestone valleys
 Alps commanding attention peer
 Over small insignificant
 Patch-work farmlands
 The redglow of evening
 Gleams down upon the
 Bare silhouetted Autumn willows
 Green the grass
 Still the water
 An owl hoots
 Mice scuffle over the forest floor
 While above is an opossum
 Scratching the bark
 Of a Macrocarpa tree.

Donald Kayne

o Possum Hut Workparty 3 Sept o

Things didn't look too good leading up to the day, main reason, I felt was that I had made a bad booboo having a work party the morning after the Annual Dinner. Come Sunday morning and we had nine keen workers, that was great! and it was a Hi Ho Hi Ho and off to work we go , a pleasant day for toil. .

We worked our way down to Possum Hut for lunch and then it was time for a lunch break, and a very pleasant one too. The afternoon was spent from Possum Hut to Green Hut site.

We achieved what we set out to do so it was all very worthwhile. Worthy of note, one female in the party. Sharon St Clair-Newman, (a tough wee chick, this one, and a real find out of Bushcraft '89), she mowed them down with the best of us. A special thanks to DOC for the use of their equipment and all the bods who gave their time to help. Stephen Cathro, John Galloway, Neville Mulholland, Peter Mason, Mark Planner, Sharon St Clair-Newman, Chris Earhart, Les Smith and yours truly, Doug Forrester. Thanks Team!

PS say Ed, I've got a great idea for next years work party, what say we organise a team of woman also, that way they could do a batch of scones and pour tea for us poor male workers. What do you think Ed?

(My comments would not be printable Doug!!Ed)

ALL COMMUNICATIONS
TO BE ADDRESSED TO
"THE COUNTY CLERK"
P.O. BOX 24, LAWRENCE

TUAPEKA COUNTY COUNCIL

27 October 1989

LAWRENCE, N.Z.

The Secretary
Otago Mountaineering & Tramping Club
P O Box 1120
DUNEDIN

RE: WAIKAIKA BUSH ROAD CLOSURE

Dear Sir

Council is in receipt of the Ombudsman's findings upon his investigation of the Council's road closure of Waikaia Bush Road.

It has been established that although Council was acting in what it considered to be the interest of safety of the public, it acted beyond the letter of the law.

Council has resolved the following:

As a result of the findings of the Ombudsman and in giving consideration to the wider issue of civil rights Council resolves to recommend to the Central Otago District Council that it resolved to accept the Ombudsman's findings and take no further action in closing the Waikaia Bush Road to the public.

L G WILSON

DEPUTY COUNTY ENGINEER

=====

The Tuapeka County Council has closed the Waikaia Bush Road to the public every winter since 1982.

It has taken eight years and a ruling by the Ombudsman for them to finally admit that they have no authority to close the road.

THE CLASSIFIEDS

HAVE SOMETHING FOR EVERYONE

Now that balmy, summer nights are fast approaching, treat yourself to the soft comfort of a Thermarest sleeping pad - (pofta pad to most)
BRAND NEW and newly arrived from the USA.
Ultra lite (3/4) only 482 grams \$75-00
Standard (3/4) only 680 grams \$70-00

see Teresa or contact her on 776-685.

LABOUR WEEKEND - MACETOWN

21 - 23 October

FRIDAY - Teresa ~~fast~~ charms her way out of a speeding ticket, she was mistaken for a doctor!

We camped just before the Glendu Bay Motor Camp - there is a dirt track on the lake side of the road.

SATURDAY - We left at 9-20 am from the Motatapu Station and the road chasm. We got passed by four Mountain Bike riders and we called in at the hut by Glencoe Bush. This was a great wee runholders hut with a lovely T & G ceiling. John proceeded to give us a lesson on top dressing because as far as the eye could see, there were lovely green strips where the plane had dropped the load. After an easy five hour day we arrived at the junction to camp. A couple of pack horses (real apallosas) arrived too late to carry Rhonda but alas, they travelled in wrong direction. Tea was cooked in a 'suspect' hole which was perfectly shaped like a big Outhouse offal pit. John however, seemed the only one not happy about it. We spent the night star gazing because the southern Aurora was putting on a fine display.

SUNDAY - As this day was slightly harder over Roses saddle and down the Arrow River to Macetown Teresa decided to give Neville's party three old cracked dirty bottles (priceless heirlooms, she claimed) to carry out. The first part of the track up to the saddle was a 4X4 WD track and then it became harder to find with the trail became an old miners horse trail which had collapsed in places, all it was possible to see at times was the bank. This part took 1 3/4 hours to climb to the saddle with no water. The trip down was great with lovely views and was quite easy because once you reach the top fenceline the track can be easily seen on the other side. After a fairly straight forward decent to the river where we met Neville's party on the way up, it started to rain and the mist rolled in. Lunch was had under Teresa's anorak and then we followed a rough path through matagori and found it easier to follow the river. After three hours, four sodden trampers stumbled into Macetown to claim Mrs Needhams house. (one of three huts still standing.)

MONDAY - After a late start we went to see Anderson's battery and then it was on up to the Homeward Battery (one hour return). Both were really worthwhile trips. We pressed on the final three hours to Arrowtown in which time we were passed by numerous trailbikes, mountain bikes and 4X4 WD.

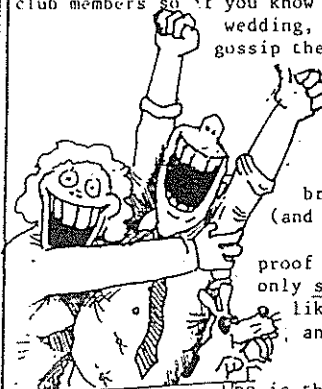
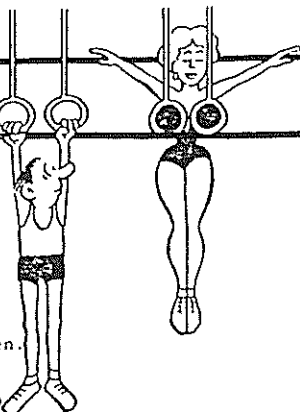
Julie Clark for Ronda Robinson, Teresa Wasilewska and John Gallaway.

(This report was done by a non-member on her first OTMC tramp - here's hoping there will be many more enjoyable trips to fill the pages of this bulletin
.....Editor)



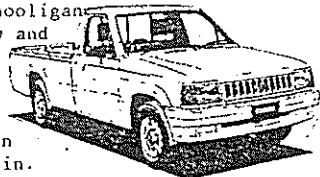
Hotgossip

This part of the Bulletin is designed to keep members up-to-date of the day to day happenings of other fellow club members so if you know of an upcoming engagement, wedding, birth, romance or just plain gossip then please tell your friendly editor - believe it or not I am not psychic and need a little knudge every now and then.



Ties with the OTMC are hard to break and proof of this is the arrival back to Dunedin (and the OTMC) of a couple of members who have been living in Australia for the last three years. Further proof of this was the fact that a house was bought within only six days of their arrival in Dunedin. We would all like to welcome Eric and Julie Lord back to all the old and not so old faces of the OTMC.

Who is the young (or not so young) hooligan seen to be cruising the streets and 4X4 tracks in a new and racy red ute. Boys with new toys seem to have contagious enthusiasm with a number of fun seekers requesting a ride.



Congratulations goes to Cathie Brumley & Euan Kennedy on the safe arrival of a beautiful little girl called Mirrin. Our best wishes to a very happy and proud Mum & Dad.

PARAKEET RIDGE - DAY TRIP

October 29

A phenomenal fifteen people turned up for this wander into the Silverpeaks. There was a good mixed bunch of people, ranging from first timers on a club trip to a couple of people who had over twenty years active membership behind them.

We set off from Hightop, and ambled around to the start of Green Ridge where we met Mike Gillies, who was off on his own trip. Next stop was the old Green Hut site where the warm muggy conditions meant a long break was definitely in order. From here it was upwards and onwards to Parakeet Ridge. We stopped at the high point for a leisurely lunch stop with Richard and Dave making a detour to ring bark a couple of pines. We retraced our steps back to the main ridge with no sign of grotty bush which had been forecast. Five people continued to Pulpit Rock while the rest of us headed for the Green Hut site. A refreshing shower of rain cooled us all down before we headed for the cars.

So where exactly is Parakeet Ridge? Try asking Jillian Underhill, Ian McElhinney, Annabel Boyes, Richard Pettinger, Tracey Pettinger, Dave Levick, Sue Levick, Yvonne Greer, Anne Marris, Claire Hand, Stephen Calthro, Megan Park, Margaret Middlemass, Anne-Marie Barnes or David Barnes.

An enjoyable day trip had by all.

MARINE RESERVES

The Department of Conservation has sent the following information and questionnaire package on Marine Reserves.

The aim of the Marine Reserve programme is to establish a network of reserves to capture the special and typical features of each part of the coast.

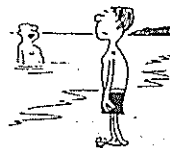
Specific reasons for protection might be:

- wild and scenic qualities
- typical physical features of your part of the coast
- places with special cultural, spiritual or historical value
- areas containing special habitats or ecosystems
- potential for recovery; for example the Leigh Reserve, in Auckland, has been allowed to recover from an overfished barren coastline to it's original rich natural state. This is the potential of virtually any part of New Zealand's coast.

Have you got any special concerns you would like to raise, or are there any specific sites you would like to see protected?



Aramoana?
Cattlins? Puysegur Point?
Hoopers Inlet? Waitutu?
Breaksea Island?
Fiordland? Curio Bay?
Sandfly Bay? Nugget Point?
Port Craig?
Tautuku?
Blackhead?



"Come on in, the effluent's fine."

People are invited to make an individual submission to DOC. You can pick up a copy of the Marine Reserves folder at the DOC office at 77 Lower Stuart St. Please pass on comments or suggestions to Jane Bruce, ph 730-257.

DON'T FORGET that on 16 November there is a talk on Marine Reserves by Stephen Broni from Department of Conservation. If you are interested in making any part of our coast protected then this night would be well worth attending.

16 November at the club rooms.

HAT'S ON WHAT'S ON WHAT'S



SOCIAL PROGRAMME



NOVEMBER 23

YELLOW EYED PENGUINS

A representative from the Penguin Trust will be at club to talk with us and tell us everythin we have ever wanted to know (and much more) about these rare birds and thier habitat on the peninsula.

NOVEMBER 30 LOUISE SUTHERLAND "Adventurer Extroidonaire"

Louise cycled the Amazon Jungle to raise money for a medical clinic over ther. She has just returned from South America and we have managed to get her to give a talk about the Amazon jungle. She will also have copies of her book for sale, which sounds very interesting (to say the least).

Come along and support Otago's own adventurer.



DECEMBER 7

RAIN FOREST ACTION COUNCIL

This elite group strives to bring our attention to the uniqueness and importance of tropical rain forests. They are involved in a campaign to halt their destruction. Why? you may well ask.

Come along and find out why they are so important.

DECEMBER 14

CELEBRATION!!!

Last club night for 1989. This event calls for something a little different. A Wine & Cheese (or sparkling Speights, the true champange of the south). Bring along what ever takes your fancy and then let your hair down for a relaxing and stimulating company.



OTMC X-mas Party 9 Dec.

The OTMC have always celebrated Christmas in a BIG way and this year will be no exception.

This year it will be held just out of Hindon in a wool shed so there will be plenty of room. The cost is \$10-00 and this includes a barbeque tea and the hire of a hall. This year we are trying something a bit different and will have a stereo with lots of tapes. If you have any favourites, then bring them along. Of course we will have a santa so bring a pressy for him. If you don't want to drive then take the train out. Costs for this and more information, phone Elspeth at 551-245