

Otago Tramping and Mountaineering Club

Development of Pineapple Point as a Lookout

Flagstaff Scenic Reserve



100 Years Of Tramping and Mountaineering
OTC/OTMC Centenary 1923-2023

Development of Pineapple Point as a Viewpoint

Location Map



Pineapple Point as seen from Prospect Park



Development of Pineapple Point as a Lookout

Flagstaff Scenic Reserve

Overview:

Pineapple Point is an early locality on the slopes of Flagstaff which offers a panoramic view over Dunedin City and environs. It was originally accessed from the Ross Bush track (*now known informally as the Original Pineapple Track*) on the eastern approach to Flagstaff from Ross Creek / Glenleith (Booth Road). It is located immediately to the south of the current Pineapple Track at a point where the track exits the upper edge of the bush at [-45.831012, 170.487342](#), at the 460m contour.

There are references to Pineapple Point in newspaper reports from the 1910's and 1920's. A report on a local walkers trip from Ross Creek to Flagstaff appeared in the Otago Daily Times on October 8, 1921. This report includes the following statement which has assisted in confirming the location of Pineapple Point:

'As soon as we emerge from the bush a fine view opens out, but we hold back our admiration till we have circled round to the right, and reached our beloved Pineapple Point.'

Here is spread before us what is undoubtedly one of the loveliest views in the vicinity of Dunedin. Looking over a foreground of bush we see nearly the whole of the City of Dunedin lying at our feet, with the wide, blue ocean framing the only part of the picture which the green hills leave bare.

Now the glasses are brought out, as there is much of interest to see, whether it be the traffic along the winding Leith road to Sullivans Dam, the reflections in the deep blue water of the reservoir, the shipping at the wharves, prominent buildings round the city (such as the new hospital at Wakari), or the coastline stretching far away to the south past Taieri Island to the Nuggets, nearly 60 miles away'

Significance to the Otago Tramping and Mountaineering Club:

The Otago Tramping Club was formed at a meeting in Dunedin City on August 23, 1923. At that meeting it was proposed that the first walk be a *'walk over Flagstaff on Saturday, Sept. 1st 1923, meeting at the Reservoir at 2.30pm'*

A subsequent item in the newspaper reported in part *'a party of about 50 members met at Ross Creek Reservoir. The route thence was via Ross Bush track to Pineapple Point, and then over Flagstaff, most of the party visiting the trig'*

The Otago Tramping and Mountaineering Club are celebrating 100 years of continuous activity during 2023, and are proposing to highlight the early importance of Pineapple Point to the city and our foundation members. It is proposed a short access track along with a commemorative seat and plaque be built / installed to access Pineapple Point.

Below: The expected view to be obtained from Pineapple Point once the broom is removed.



Development of Pineapple Point as a Lookout

Proposed overview of work planned

Scope:

Pineapple Point itself is in open snow tussock, with tall broom encroaching the south-east edge, restricting in part what is an impressive view over the harbour and city. The following is a high-level overview of the work that the OTMC are proposing to undertake to create a lookout at Pineapple Point.

- Establish a gravel track (*similar in construction to the adjacent Pineapple Track*) for a length of approximately 75m from the current Pineapple Track to Pineapple Point. This track would commence from a point approximately 35m north-west from where the current Pineapple Track exits the bush. The new track will follow an informal existing 'ground trail' that is already obvious to follow.
- Construct a wooden routed sign at the junction with the Pineapple Track with the proposed wording: 'Pineapple Point Lookout'
- Remove all broom and other non-native species in the immediate area as required to restore the view
- At Pineapple Point, construct a gravel area of 5m or so in diameter, edged by locally sourced small rocks.
- Within the above circle install a wooden seat, orientated for the best view (ideally over Ross Creek (reservoir), Otago Harbour and the City).
- Install a plaque commemorating the early Dunedin walkers, and the formation of the Otago Tramping Club, as well as noting the installation is to celebrate the Centenary of the club.
- Clear vegetation for a short section on either side of the historic fence adjacent to Pineapple Point itself. Legend has often repeated that a local grocer (most likely Mr. Oscar Balk, foundation member and first Otago Tramping Club President) hung empty pineapple tins to the fence to guide early walkers towards Flagstaff. It is assumed that this practice has led to the naming of both Pineapple Point and the much later current Pineapple Track, which dates from the 1970's.
- Install non-intrusive signage at both ends of the original Ross Bush track from behind the Water Treatment Plant to where it exits the bush near Pineapple Point (*this existence of this track is shown on the current LINZ Topo50 Map*). No upgrade to the track surface is planned. This track is currently used by more confident trampers, and provides a loop track between the Water Treatment Plant and Pineapple Point.
- Create an information page on the OTMC Website (www.otmc.nz) outlining the history of Pineapple Point and Flagstaff to the city and the OTMC.

Timing:

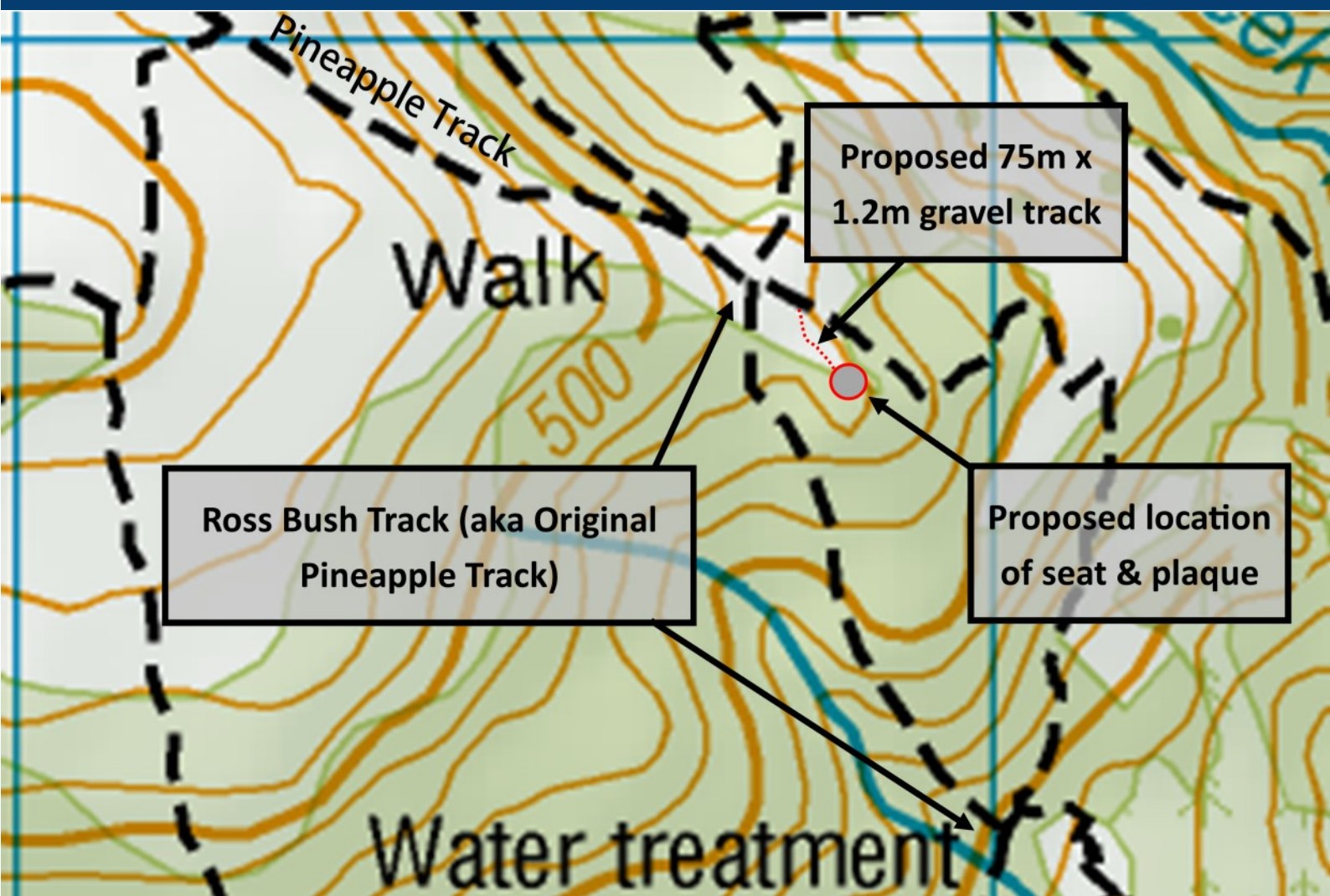
It is proposed to formally 'open' the seat and plaque on September 1, 2023 (a Friday afternoon). This date and time will be exactly 100 years since the very first Otago Tramping Club trip. A follow up event is also planned for October 21, 2023 (Saturday afternoon). This is during the OTMC Centenary Weekend and is a chance for out-of-towners to visit the site.

Early proposed timings are:

- **May/June 2022 onwards:** *trim tussock for proposed access track, remove broom etc. to ascertain the view that will be obtained.*
- **Summer / Autumn 2022/23:** *gravel track, install gravel area at Pineapple Point.*
- **July / August 2023:** *Install seat / plaque and make site ready for formal opening on Sept 1, 2023.*

Development of Pineapple Point as a Lookout

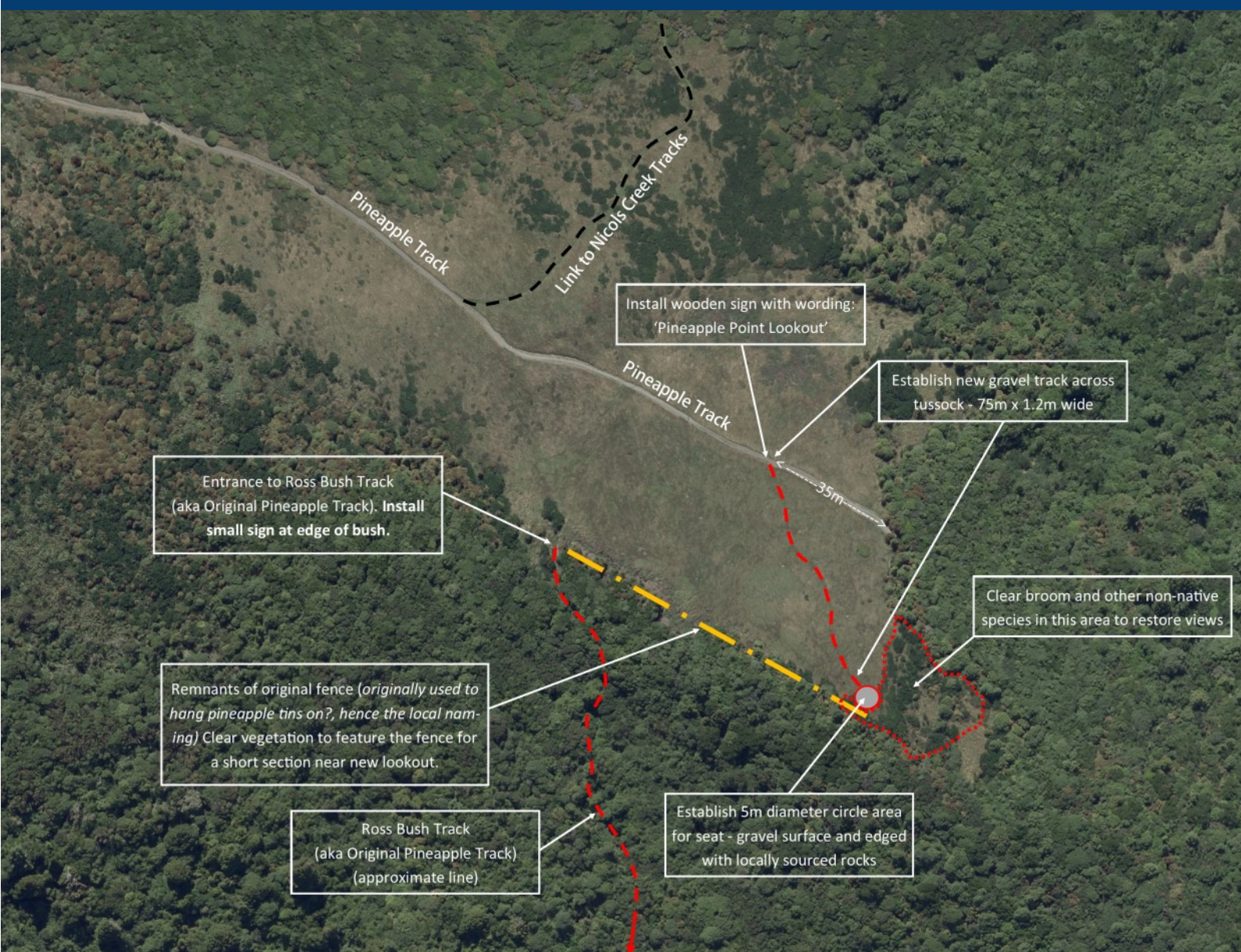
Proposed overview of work planned



OTMC Party at Pineapple Point,
September 1, 2019

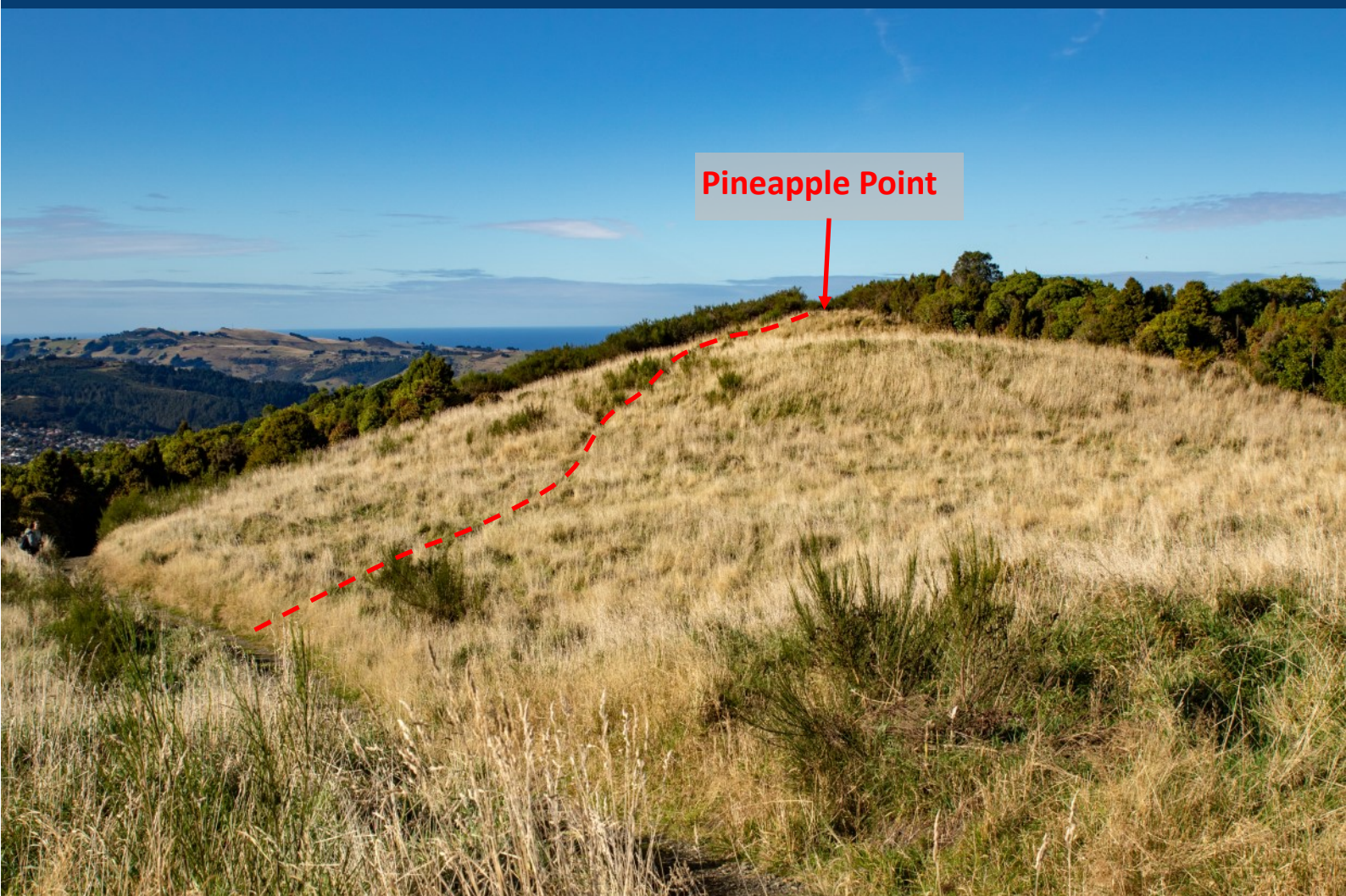
Development of Pineapple Point as a Lookout

Proposed detailed overview of work planned



Development of Pineapple Point as a Lookout

Proposed overview of work planned



Development of Pineapple Point as a Lookout

Detailed Work Plan - Pineapple Point

Labour (who will do the work):

It is anticipated that all work will be undertaken by club members and friends of the OTMC on a voluntary basis.

Access Track:

It is expected that due to the proximity to the Pineapple Track visits to Pineapple Point will become popular. To restrict damage to the adjacent open snow tussock area the OTMC are proposing to construct a gravel track, similar in construction to the current Pineapple Track.

Starting at a point approximately 35m from where the Pineapple Track exits the bush, a 75m x 1.2m track will be built to Pineapple Point. There is existing evidence of foot traffic over this area, and a defined path is already visible on the ground. It is intended to follow this line - it is a more or less direct line, but meanders slightly to account for the contour - this is preferable to a dead-straight line.

The first stage will commence once approval from DCC is gained, and will involve using a scrub-bar or similar to cut the snow tussock over the length of the proposed track. This will define the track encourage foot traffic, which in turn will help bed the track in. Any moderate sized rocks uncovered will be retained for work at Pineapple Point itself.

During the Summer/Autumn 2022/23 period we plan to gravel the track - getting gravel to the site will be problematic, and we would like to work with the DCC and make use of any gravel placement / upgrades planned in the area.

Pineapple Point Seat Location:

The OTMC are proposing to construct a circle area at Pineapple Point with a diameter of 5m - ideally this will have a gravel base, and be edged with small rocks sourced from the track construction, or found locally.

A similar timeframe for the track would be used - i.e. remove the long grass to create the outline for the seat location, and gravel in conjunction with the gravelling of the access track.

Broom removal:

Tall broom on the Dunedin City side of Pineapple Point is the main unwanted vegetation, which is currently restricting the view from the Point.

The OTMC would remove all the broom in the vicinity of Pineapple Point. The broom will be cut as close as possible to the ground to reduce trip hazards, and treat the cut stumps with 'Triumph Gel Herbicide' - this will be applied individually to the stumps by hand.

Pineapple Point signage:

The club propose to install a simple sign at the junction of the Pineapple Track and the access track to Pineapple Point. This would be wooden with routed lettering stating: 'Pineapple Point Lookout'. The sign would be installed on the opposite side of the Pineapple Track from the new access track, and be around 600mm in height.

Pineapple Seat and Plaque:

It is envisaged the seat would be located within the 5m circle on Pineapple Point, and be orientated for the best view - it is anticipated that this will face the City, but we need to remove the broom first to confirm this.

The OTMC propose the seat to be wooden, to a similar design to the one the Ben Rudd's Trust have installed on the OTMC Ben Rudd's property on the far side of Flagstaff (*see photo on the next page for reference*).

It is also planned to include a plaque - the location of this is to be confirmed, but could be either mounted on the seat, or attached to a rock cairn adjacent to the seat. The plaque would recognise the significance of the site to the early Dunedin walkers and the OTC foundation members. A smaller plaque could be installed on the seat showing the development of the site has been done to commemorate the Centenary of the OTC/OTMC (1923-2023).

Development of Pineapple Point as a Lookout

Detailed Work Plan - Original Fence & Ross Bush Track

Historic Fence:

The remains of a hardwood post and wire fence runs long the edge of the bush on the south-west side of Pineapple Point. Legend has it that the use of the name 'pineapple' is derived from the practice of a local grocer hanging empty pineapple tins on the fence as a form of track marker. It is believed the 'grocer' was Mr. Oscar Balk, who was instrumental in forming the Otago Tramping Club, and became the inaugural President.

Broom has already been removed in the vicinity of the fence by others, and we propose to trim any remaining vegetation away from the remains of the fence for a short section in the vicinity of Pineapple Point only. The fence has historic value, and should be retained as much as possible due to the backstory it tells.

Ross Bush Track / 'Original Pineapple Track':

The original track to Pineapple Point is on the true left of the upper reaches of Ross Creek. The Water Treatment Station and exotic forests have probably destroyed the lower sections, but a well used section between the DCC Water Treatment Station and Pineapple Point still exists.

Loop tracks are appreciated by walkers and trampers - as part of the development at Pineapple Point, the OTMC are proposing a low-key upgrade of the track. This would be limited to small signage at each end. No upgrade to the track surface is proposed.

Signs would be at the rear of the Water Treatment Plant, and at the bushline entry/exit point near Pineapple Point. No signage would be installed on the main Pineapple Track. Information regarding the track would be added to the OTMC website, with the intention that those who search for this information will have the skills to traverse the original track.



**Seat installed at Flagstaff - OTMC
Ben Rudd's property - the OTMC
are proposing a similar design for
the Pineapple Point seat.**