



Otago Tramping and Mountaineering Club

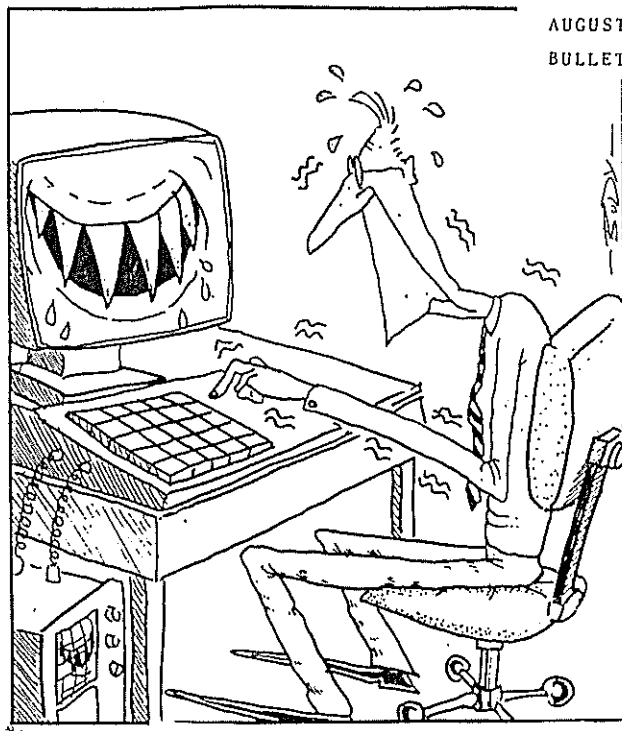
P.O. BOX 1120 DUNEDIN

BULLETIN

Registered at P.O.H.Q. Wellington for Transmission by Post as a Magazine

AUGUST 1990

BULLETIN NO. 491



THE EDITOR AT WORK

PRESIDENT	Stuart Mathieson	534-359
VICE PRESIDENT	Rhonda Robinson	738-142
SECRETARY	Mark Planner	763-988
TREASURER	Teresa Wasilewska	543-886
CHIEF GUIDE	Antony Pettinger	737-924
EDITOR	Debbie Pettinger	737-924
MEMBERSHIP SEC	Ian Sime	536-185
SOCIAL SEC.	Elsbeth Gold	551-245
GEAR HIRE	Russell Godfrey	557-205

THE OTAGO TRAMPING & MOUNTAINEERING CLUB

MEETS EVERY THURSDAY

AT 7-30 PM

AT 3 YOUNG STREET
(clubrooms)

TRIP LIST

AUGUST 26

ORBELLS CAVE

Mark Planner 765-988

This trip promises to be interesting and Mark is promising good weather. This place is not far from Dunedin and if want to do something a little different then be at the clubrooms at 9-00 am

SEPTEMBER 2

ORIENTEERING

Ross Cocker 545-995

A trip with a diffence!! Ross is planning on checking everyone out on his course so brush up on those map and compass skills. A good chance to see how much you know before Bushcraft. Check with Ross to see where it is going to be held and more information will be given at club nights.

SEPTEMBER 8-9

SNOW ONE (Basic Snowcraft)

This is a course run each year by the club in order to teach new members valuable skills for all winter tramping, ie: crampons, ice-axes and self-arresting. Essential skills for all those thinking about winter tramping in the snow. The trip will be lead to where the best snow conditions are so sign the trip list before closing date of 30 August 1990

SEPTEMBER 9

NARDOO VI (M)

Ross Cocker 545-995

Another of Ross's specials. A trip that always draws a large number of people and most have already been there. What better way to see a place than with some one who knows the area well. Be at the club rooms by 9-00 am

SEPTEMBER 15-16

X-C SKIING - SPRING SKIING

Bruce Mason 761-544

This trip will be heading to where there is the best snow and weather conditions. Grab a pair of ski's and have a go. An easy way to see the hills around you and who knows you may even enjoy it. Trip list closes 6 August 1990

SEPTEMBER 16

JUBILEE HUT (M-F)

Russell Godfrey 557-205

The Silverpeaks are only at the back of Dunedin and the club hasn't been there for a while. A fitter trip is called for so check with Russell before hand. Be at the clubrooms at 9-00 am

SEPTEMBER 29-30

BEN OHAU (ALL)

Mike Floate 738-780

Another area that the club hasn't been to in a while and it is the time of year for it. All grades from easy day walks to the more experienced and fitter parties can all be catered for. Trip list closes 20 September 1990

A MESSAGE FROM OUR FRIENDLY BUSHCRAFT DIRECTOR FOR 1991 , ANTONY PETTINGER IS LOOKING FOR SOME ONE TO CO-ORDINATE THE TIROHANGA WEEKEND AND ALSO ANY VOLUNTEERS FOR HELPING ON ANY OF THE WEEKENDS. MAKE YOURSELF KNOWN TO HIM!!!

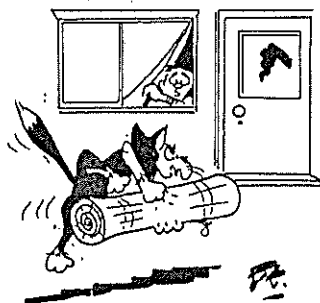
EDITOR'S DIARY



This is my last bulletin and next month you will have a new Editor with new ideas. The best of luck to who ever that may be. I would like to thank all those wonderful people who contributed something to the bulletin, whether it be a poem, letter to the Editor, trip report, pictures, etc. Thank you, you made the bulletin much more interesting. Also those that helped with bulletin work parties, your time and effort did not go unnoticed. I have enjoyed being Editor for a year and hope that you have all enjoyed my bulletins as much as I have enjoyed putting them together. It is a challenging job that demands a lot of time and new ideas are always welcome. It is a relief to see the bulletin come out each month but the sense

of achievement is unbeatable. To the next editor I hope you enjoyed it as much as I have!! Who knows, one day I may even want to do it all again.

You're envelopes are full with bits and pieces about the Annual General Meeting and I hope you all read them. This is an important event in the club year and it is essential we have a good turn out. It is time to elect a new committee and there are plenty of people who would like to become committee members, so be sure to have your say and turn up at our AGM. It is good to see so much interest in the committee from members and I hope it continues, our club must be very healthy. Don't forget 30 August 1990 at the club rooms.



"I think the cat wants to come in!"

This year you may be called on to do a small bit of fund raising as the club must now be more reliable on its members instead of interest to keep the club finances in the black. There is an idea being put forward in this bulletin and it would be most helpful if it was well supported. RECYCLING ALUMINIUM CANS It is easy, brings in a bit of money, aids the environment and camalco are giving some money from each can towards a "Save the Kakapo Fund". Bring along your cans to club, where there will be a bag to put them in, either in the kitchen or out the back door. Lets get into recycling!! All the money will go to the club for something specific, maybe socials, clubrooms or even a committee slush fund!!!! Any ideas on what the money should go to? If you have any ideas at all then see Elspeth.

Anyway that is all I have to say for this month so see you all at the Annual General Meeting on 30 August 1990.

Debbie

.....Editor

This is your Bulletin and to make it interesting I need lots of Trip Reports, Letters to the Editor, Recipes, Crosswords or plain gossip. If you have anything to contribute please hand it to either Debbie or Antony Pettinger at Thursday Club nights or post to 'The Editor' OTMC P O Box 1120 Dunedin. The aim of the Bulletin is to keep members informed on what is or has happened in the club.

Moonlight

Two vans and a car left Dunedin at about 18-15 and headed off into the sunset. At 0-15 and three drivers later, our van arrived at Routeburn Shelter. There was a slight breeze, a clear sky and a near-full moon, and as the boring ones settled down in the shelter, the adventurous ones set off towards Routeburn Flats Hut. The walk to the Flats Hut was a highlight of the trip for me:- there were glow-worms in great abundance, there was an eerie warm breeze sweeping down the valley and the whole scene viewed by moonlight was generally awesome!! Heads finally hit pillows about 3-00 Saturday morning.

Adventure

Next day the conversation started at about 8-00 and whilst discussing reasons to get out of bed the following quotes were heard:-

Male - "Where's your sense of adventure woman?!"

Female - "My sense of adventure of adventure is in a sleeping bag"

Male - "I've heard of women like you!!"

Thus the mood was set for the weekend. We eventually set off up the true right bed of the North Routeburn at about 9-45 under high cloud and light rain, which stayed till about 17-00 when it poured down.

Having skillfully forecast the bad weather we decided this would be a day trip up the North Routeburn. This valley is really quite spectacular and well worth a visit. The path is a little indistinct in the open where it was covered in snow, but not difficult to follow.

We encountered in this valley, Kea's, snow, interesting moss and lichens, ice, an avalanche, a strange pond which looked like someone had dumped into it several sack-fuls of powdered milk and then some more snow. Lunch was under a rock bivvy and while me and Penny sang as we watched and waited till the billy boiled, Tim and Dean explored the head of the valley. We returned to the Flats Hut at about 16-30 just ahead of the rain.

Toilets and Telephone Boxes

After a superb of noodles, pork and veges we carried on the conversation, covering a wide range of subjects such as :-

'The most interesting place I have slept

'My most embarrassing moment

The interesting places varied from "up a tree whilst waiting to be rescued" to "in a toilet whilst waiting to sober up (twice)!"

As for embarrassing moments, diplomacy decrees that I must limit details to my own tale of blowing up a telephone box. The tellable tales ran out at 22-00 so we all went to bed.

Waterfalls

The rain increased overnight and we awoke to a very swollen Routeburn and some of the best waterfalls I have seen and I've seen a lot. Undeterred the intrepid four sprinted up to Routeburn Falls for a look and elevenses. After a short stay we wandered back to the Flats Hut for lunch, then without too much delay we swam back to Routeburn shelter, pausing on the way more waterfalls.

Daylight Robbery

On a slightly sad note, we returned to the can and vans to find they had been broken into and cleaned out of most of our gear and a radio/cassette player. A sad end to a great trip. I think it says a lot about our club, however, that spirits were still high on the journey home, with the usual frolicking, jollity and crude jokes about being robbed!

I for one felt a lot better for it. Thanks to all for a great weekend!!

Summary :- New Zealand is truly a "God of Nations". This trip proves it. Ian McElhinney (photographer, Reporter and linguist) for Tim Moore (Leader and man of the match for his scroggin), Penny Excell (comedienne and story teller), Dean Petersen (pretend photographer and one-man advance scouting party)

Conversation/Quote of the weekend :-

Ian - "Would you like some more tea?"

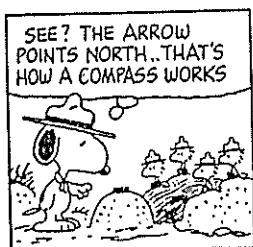
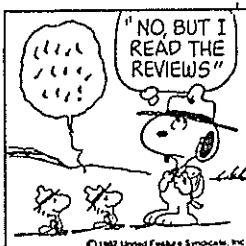
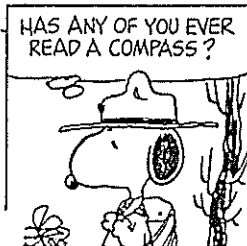
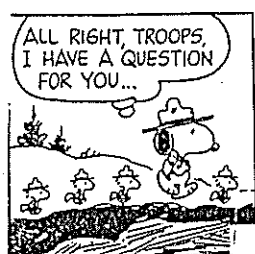
Penny - "I'll just have a touch; or shall I have the tea?"

Visitors Book Entry

Vore Fjord er better en dine fjord!

(Our fjords are better than your fjords - Norwegian)

ROSS ON HIS ORIENTEERING WEEKEND, TRYING TO TEACH
SOME OF THE MEMBERS WHAT TO DO AND HOW A COMPASS
REALLY WORKS!!!



ANNUAL DINNER!!

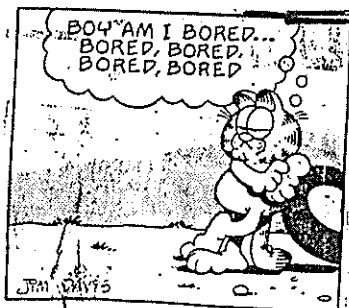
ANNUAL DINNER

This year the Annual Dinner will be held at GENESIS CAFE in the National Mutual Building.

Price will be \$25.00 each and please bring your own drinks.

Start time approx 7:00pm

The Annual Dinner is always well supported and this year will be no exemption!!!



Boots

Do you really know anything about your boots? Apart from how to clean them (or may be you don't even know that).

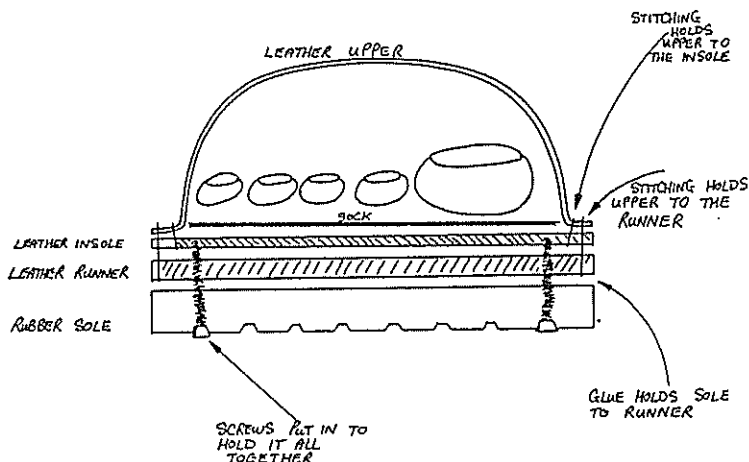
For all you novices out there (myself included) here is a diagram on the different types of boots available.

Thankyou to Paul Bingham for these.

PART ①

VELDTSCHOEN OR STITCH DOWN

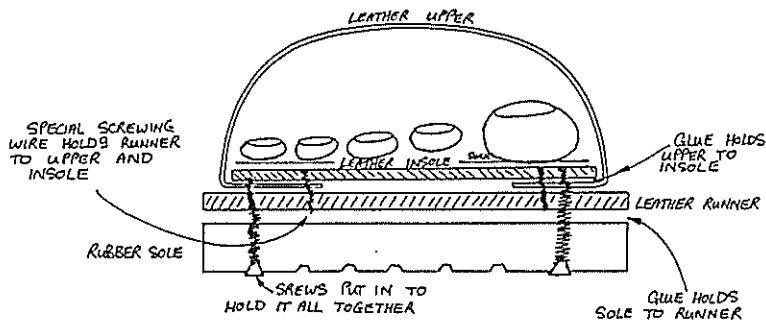
BOOT CONSTRUCTION



PART ②

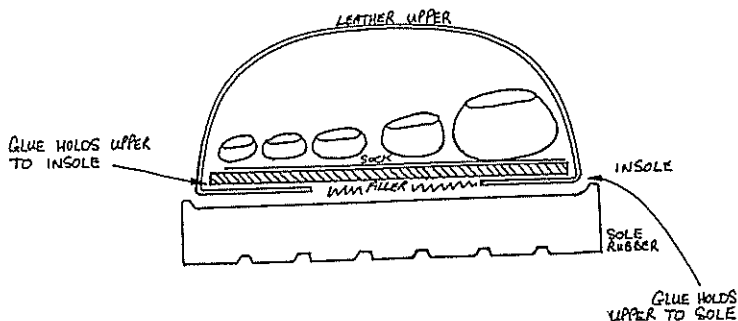
SCREWED, WIRED AND CEMENTED

SINGLE RUNNER BOOT CONSTRUCTION



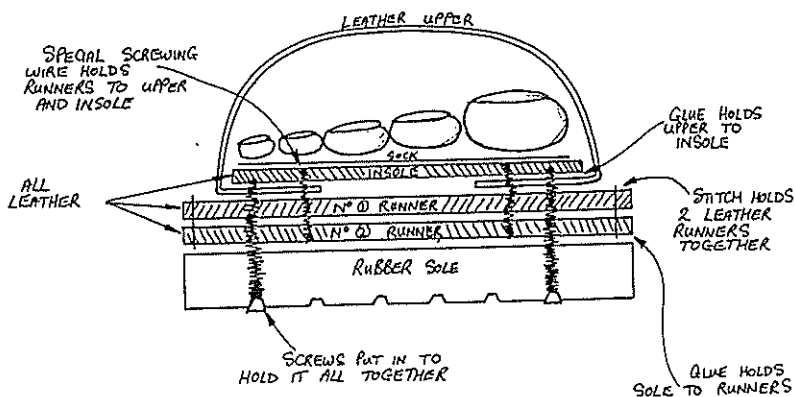
PART ③

CEMENTED BOOT CONSTRUCTION



PART ④

SCREWED WIRED AND CEMENTED DOUBLE RUNNER BOOT CONSTRUCTION



24 HOURS OF WALKING INTO A WEEKEND

TAKITIMU - 19-20 May

We started not early but not late, bypassing bulls in the nearby paddock, leaving tower peak Station behind us. The Whare creek was up so this was our first obstacle to cross and then half an hour before heading up the Creek Flats on the True Left. It was easy going until the second crossing of the Whare Creek, which was much fun (special note - always send Arthur across first then you know you can get across - Sorry Arthur). The track looked great for the first 200 metres then there was no track, unless ofcourse you are an old tracker. After some hours we found an opening beside the river still on the True right, crossing this we came to the Whare Creek Hut. Luckily a good lunch stop, only an hour behind time, short and sweet it was. On reading the Hut book we found how few trips had been up here lately.

On and up we pushed again nut much of a track, so we stayed to the spur until faced with a 200 foot water fall. After some time I found a way up but it was very steep (rock climbing does help at these times) and for the next few hours we bashed our way through bush amd scrib which was head high.

An hour before reaching the top of the scrub line, helen decided to go for two swims. We tried to tell her it was a little cold but her slippery feet did not agree. Our campsite was basic, the tent was pitched on a half foot of scrub. Morning was good with frozen boots and an early start, a cold water walk up the creek to the tops. What a great view this was!!

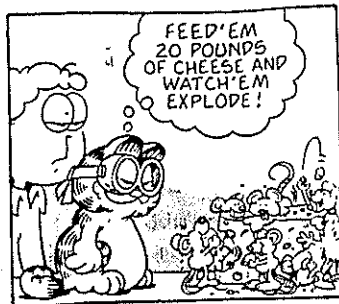
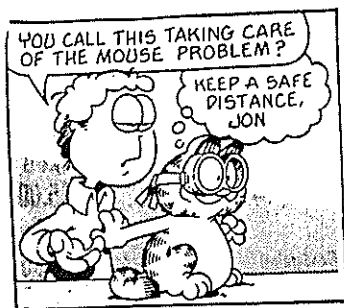
From here we had six routes to choose from in order to get out. The intended route was out because of ice and the way back was out because of lack of track and too much scrub. The way we decided was the Aparima South Branch. to get off the top we had to go across a steep ice gully. Here I used a sharp rock as an ice axe and after that the going was good!. We had rain threatening, track marking problems and the odd large stag. We met the junction of the Aparima and Waterloo burn at mid afternoon, walking down this valley for four hours saw us only two thirds down it. Camp was made at 6-30 and we had missed our ride home! We were worried that the van might wait for hours yet and the little extra food we had was well the worth the extra weight in carrying it.

Day three, we walked out over the Waterloo saddle and to Princhester Hut, then to Road end. Another 5 km of hard shingle road to a farm, they kindly helped us to organsie a rental car back to Dunedin. We arrived very late but fit and well, scratches and all eh Helen.

Summary

- Beware of this area in bad weather
- Sort out ridge lines around the Takitimus Mountains
- Beware of disused track markings
- Beware of the Moss burn map - it may not match with what you see, map even has " area obscured by cloud"
- Make sure you have some sort of money and driver licence for late outings
- Make sure you have a good back up team, we were lucky 'we did'
- and next time take a .303 down the Aparima for that stag.

Paul Bingham for Arthur B and Helen J



CLUB LAUNCHES APPEAL

In support of F M C's decision to legally challenge the Central Otago District Council's decision to close the Waikaia Bush Road access to the Old Man Range, (refer to last F M C Bulletin for details), the club committee has opened an appeal fund to meet half the cost of this important case. F M C has agreed to meet the other half.

Legal advice indicates that a strong case can be made for permanently over-turning the Council's abuse of it's control over this public road. A precedent - setting test case in our favour will have national implications for ensuring freedom of public access everywhere.

The committee asks club members, members of other clubs and organisations for support in the form of pledges. See pledge form below. On the opening night of the appeal two pledges totalling \$400-00 were made - this is an encouraging start.

Contact the club Treasurer, Bruce Mason or Mike Floate for further information.

Address

Date:

Convenor
Waikaia Bush Road Appeal
C/- Otago Tramping & Mountaineering Club
P O Box 1120
DUNEDIN

Dear Sir

PLEDGE OF FINANCIAL SUPPORT FOR WAIKAIA BUSH ROAD APPEAL

I support the Federated Mountain Clubs' action for judicial review of the Central Otago District Council's decision to close the Waikaia Bush Road on the Old Man Range during the winter months.

I pledge that I will donate, if required to, up to \$
as a contribution towards FMC's legal expenses.

Yours sincerely ,

Letters to the Editor

"CITIZENSHIP NEEDED"

Thanks to all the female NZ'ers who answered my add in the last bulletin. If I haven't all ready contacted you, don't panic!! I am gradually working through the replies, at a rate of one sack-full per week, and hope to answer all of them. Thanks again.

..... G Ore.

Dear Editor

Thank you David Barnes, for your great letter in last month's bulletin. It really hit the spot.

Back in 1975 I was invited to join the club and, as I was already a bit over the hill, my reply was that I couldn't be quite THAT mad!

Now, 15 years on and on the wrong side of 60, it is terrific to think of the tremendous amount of fun and satisfaction I am getting out of it. I would like to do my part in keeping it that way.

During the next year it is my hope to average one club weekend a month, or shall we say 11 to 12 a year. As I do not aspire (no pun intended) to Mt Aspiring or the Olivines, I would be prepared to lead an easy party on about half of these outings and thus encourage more people to safely enjoy the outdoors.

Perhaps some other leaders would like to follow suit.

..... Hugh Dickson

Dear Editor

Being a new member and Bushcrafter of 1990 I would like to express my views on club trips. The trips into the mountains sound great but I have reservations - can I keep up? will I spoil it for others?

I feel I am a medium but what is a medium? going at your speed, the leaders speed or the slowest persons speed? The tramping I have done previously on the well known tracks are with people who can be fast or slow and after a while it can be annoying so I can understand leaders feelings on the matter.

I enjoyed David Barnes comments in the June Bulletin. So as yet I have not taken the plunge on club trips except for the opening of the Peninsula Tracks.

..... Whare kakahu

Dear Editor

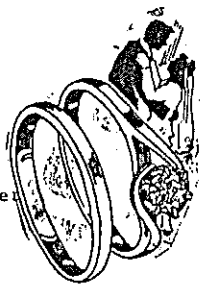
I support David Barnes in his suggestion of tactful diversion to day trips for people who have signed up for an easy weekend trip but can not be catered for on that occasion because of a leader for an easy party can not be found. This would be better than having weekend trips graded medium and above to get around the problem of a lack of leaders. It would be sad to see an experienced leader recovering from illness or injury missing out on an opportunity to lead an easy party because the trip has been advertised on the trip list and in the Bulletin as medium and above grade.

..... Kathy Woodrow.

OTAC Hot Gossip

Congratulations go John Robinson and Sue Harding on their recent engagement. Both have been very active in the club and they both share a love of skiing and the hills. Best of luck for all the future.

Another congratulations must go to Richard and Tracy Pettinger on the birth of their son Vinc ent, their first baby. We hope to see you all at club nights soon

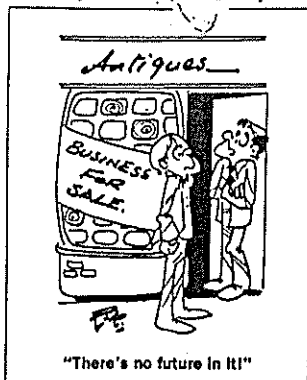


Elspeth was seen to be heading down to her crib at Kaka point - who was she with? and then later on a quick and very short trip to Australia. What could she be hiding from us?

QUOTE OF THE

Overheard at Rock & Pillar

"Do you want to sleep closer?"



Who was saying it and more importantly to whom was it said!!

Doug Forrester was seen to be jumping around on one foot then he was seen to have foot in the sink in the club kitchen. Is this some strange disease or has Doug always been like this?

One poor soul left his chair in the middle of a meeting and upon returning found it had disappeared. Who could be our masked chair pincher?

Believe it or not ... our beloved penguin lady is finally returned!!!

That's all from me folks - you can all rest easy now! I will not be on the look out for any more gossip. You will no longer have to make sure I am in listening distance.

A MESSAGE FROM THE RETIRING SOCIAL SECRETARY

I WOULD LIKE TO TAKE THIS OPPORTUNITY TO EXPRESS MY THANKS TO ALL WHO HAVE BEEN REGULARLY ATTENDING OUR THURSDAY MEETINGS.

THE JOB OF SOCIAL SECRETARY HAS BEEN REALLY REWARDING DUE TO LARGE TURNOUTS AT CLUB NIGHTS.

YOU MOTIVATING YOURSELVES TO ATTEND CLUB NIGHTS KEPT ME REALLY MOTIVATED.

THANK YOU TO ALL WHO HAD A TURN ON THE SUPPER ROSTER, (IT,S NOT SO BAD IS IT).

I'VE REALLY ENJOYED THE LAST YEAR AND I HOPE THAT THE NEXT SOCIAL SECRETARY HAS AS MUCH FUN AS I DID.

THANK YOU.

*Cheers
Elspeth*

WHAT'S ON WHAT'S ON WHAT'S

SOCIAL PROGRAMME

AUG 16 PHOTOGRAPHIC COMPETITION.

GREAT PRIZES, YOU GOTTA BE IN TO WIN.

CATEGORIES ---

BEST WINTER SHOT

BEST TRAMPING SHOT

PERSONALITY SHOT (PEOPLE)

LANDSCAPE

GENERAL.

AUG 23 GERALDINE WILL GIVE A SLIDE SHOW ON HER RECENT TRAMPING IN BOTH NORTH AND SOUTH ISLANDS, AND SHE MAY LET US INTO SOME SECRETS ABOUT SCOTISH TRAMPING.

AUG 30 AGM AGM AGM AGM COME ALONG AND VOTE IN A NEW COMMITTEE

SEPT 6 PHILLIP TEMPLE. 25 YEARS AGO A TEAM SAILED A SCHOONER TO A REMOTE ISLAND IN THE SOUTHERN INDIAN OCEAN.

THEY CLIMBED THE 3000 METRE PEAK ON THE ISLAND AS WELL AS COMPLETING SOME SCIENTIFIC WORK. A HALF HOUR VIDEO HAS BEEN PUT TOGETHER OF THE EXPEDITION.

AFTER THE VIDEO PHILLIP WILL INVITE US TO SPEAK ABOUT OUR EXPERIENCES WITH KEAS, THERE IS CONCERN THAT NUMBERS ARE DWINDLING SO YOUR FEEDBACK ABOUT THIS BIRD MAY HELP TO ESTABLISH WHETHER THERE COULD BE A PROBLEM.

SEPT 13 B. Y. O. SLIDES

SEPT 20 KEN MASON THE ROCK AND PILLARS, HISTORY 1923-1990

That's all from me folks

